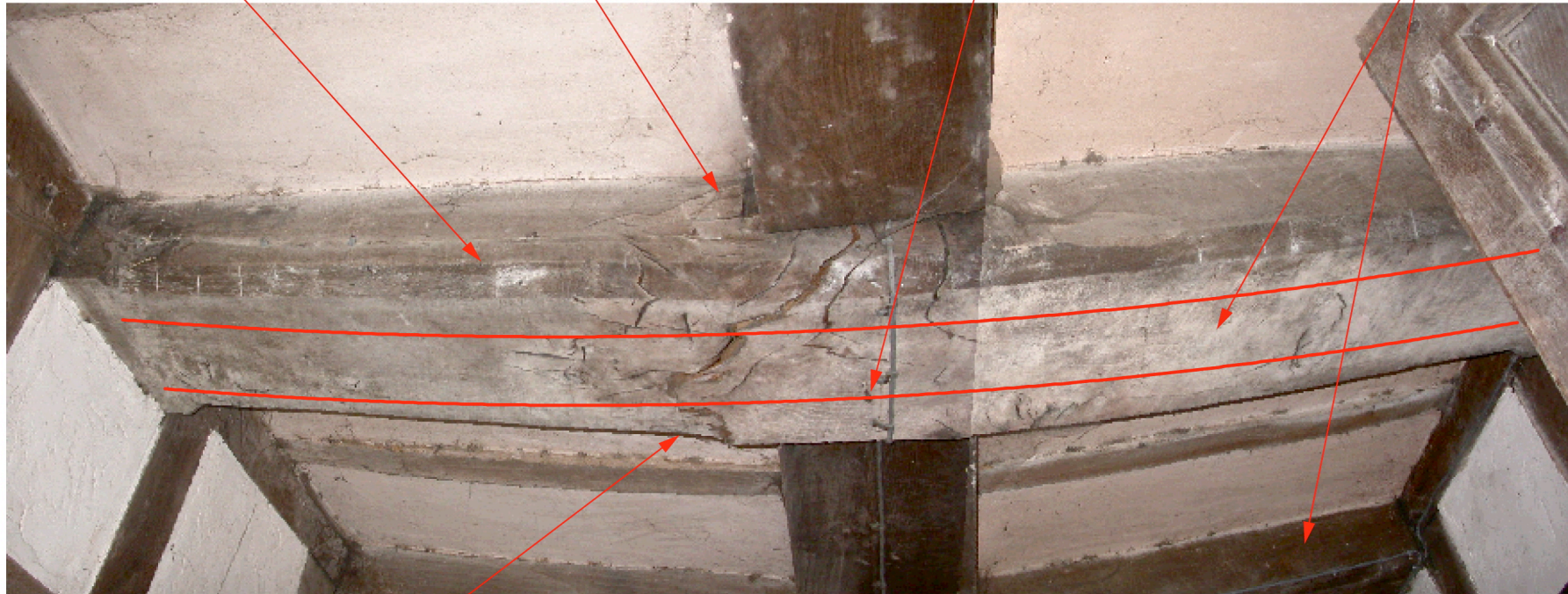


Timber Size 350 mm wide x
240 mm deep, span 2.5 m

Open half lap or mortice
& tennon joint.

Install 2 Rows Carbon Fibre
Plates 50 mm deep carbon fibre
plate on edge through underside
of beam.

2 No Timbers support
large brick chimney.



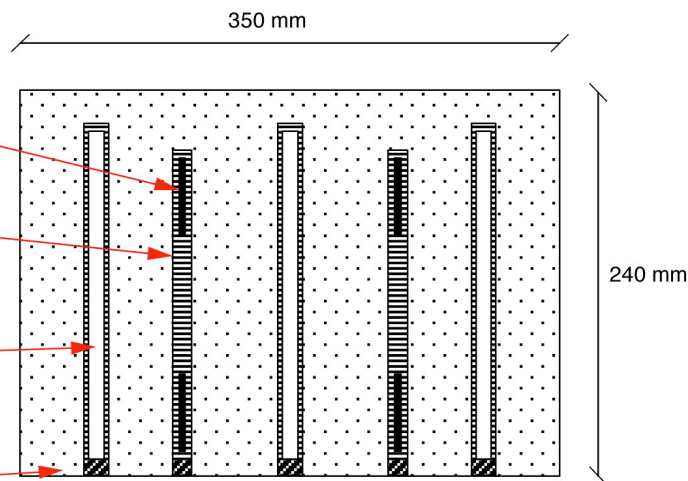
Large knot in timber,
timber failed

50 mm Deep x 4 mm Thick
CFRP Plate

Rotafix RSA

12 mm Rotaflex Rods @ 30
Degrees to Horizontal Set In
RSA

Timber Closures



Typical Construction Details

Repair Schedule:

- 1 Prop all other principal supporting timbers onto sole plates.
- 2 Shutter around half lap / mortice & tennon joint, inject Rotafix TG6 Timber Grout
- 3 Remove electric cable inject splits with Rotafix RSA
- 4 Prop beams, form 200 mm deep 12 mm wide, slot fix 2 No CFRP Carbon Fibre Plates 2.40 m long x 50 mm x 4 mm thick, shutter surface, inject RSA to fix plate.
- 5 Allow to cure, move props to other side of beam.
- 6 Repeat process to other side of beam.

Note: Diagonal pins installed @ 30 degrees to horizontal omitted for clarity.

TRAC Structural Ltd

Providing Solutions For Masonry Repair
23 Belvoir Road St Andrews Bristol BS6 5DQ
Tel: 0117 924 0224 Fax 0117 924 8574

Wyke Manor

SCALE	DRIVEN BY	SHC
NTS	CHECKED BY	
	DATE	
DRG. NO.	TSP 2530/1	A4